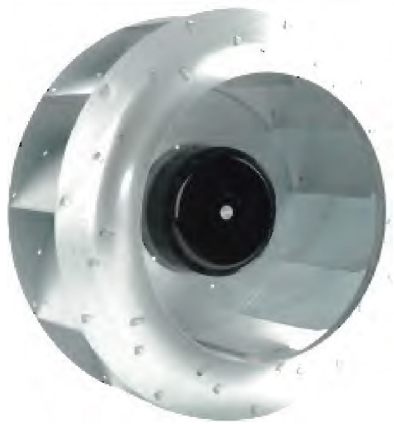
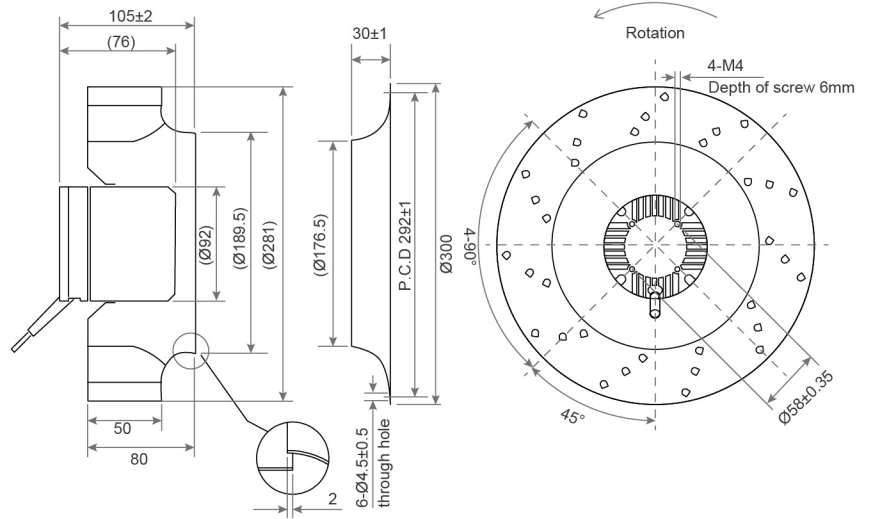


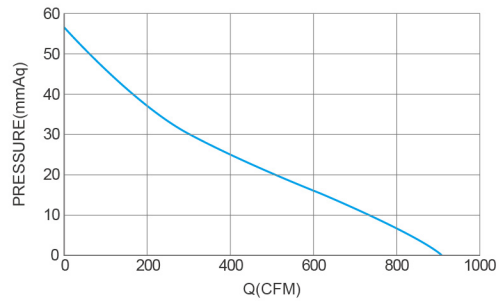
# DC Centrifugal Fan TRC28092 AF SERIES Ø280X105mm



DIMENSIONS DRAWING UNIT : mm



P&Q Curve At Rated Voltage



- Material : Galvanized sheet steel  
材質：鍍鋅板材
- Bearing System : Two Ball Bearing  
軸承結構：滾珠軸承
- Protection Class : IP42  
防護等級：IP42

Model No.	Bearing Type	Voltage (VDC)	Current (A)	Power (W)	Speed (RPM)	Air Flow (CFM)	Air Flow (m <sup>3</sup> /min)	Air Pressure (mmH <sub>2</sub> O)	Air Pressure (Inch H <sub>2</sub> O)	Temperature Min / Max(°C)	Noise (dBA)
TRC28092B24H	◎	24	4.36	105	2200	900	25.47	57.1	2.25	-25°C ~ +60°C	75.0
TRC28092B48H	◎	48	2.18	105	2200	900	25.47	57.1	2.25	-25°C ~ +60°C	75.0

⊗ : Bearing System ※ : Sleeve ★ : WRB Bearing ◎ : Ball

★如果您需要的轉速或電壓或功能不在這份清單上，請與我們業務聯繫 If you need another RPM or Voltage or Functions which one is not in the list, please contact us.

★產品詳細數據及功能請參閱承認書 Please see the approval sheet for more information . ★產品規格變更不另行通知 Specifications are subject to change without notice.