

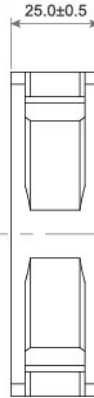
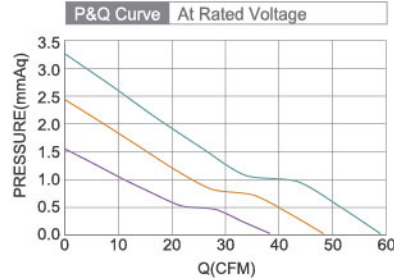


DC Axial Fan

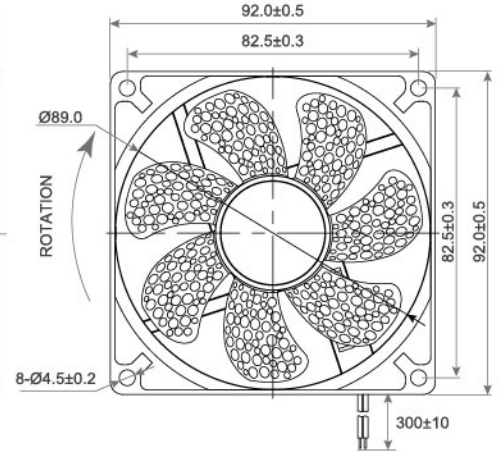
TRS9225 G SERIES 92X92X25mm



- Frame : Thermoplastic PBT UL94-V0
外框材質：環保防火PBT
- Impeller : Thermoplastic PBT UL94-V0
扇葉材質：環保防火PBT
- Bearing : ※ Sleeve · ◎ Two Ball bearing
軸承：※ 含油 · ◎ 滾珠軸承
- Unit Weight : 66.0g
風扇單體重量：66.0克



DIMENSIONS DRAWING UNIT : mm



Model No.	Bearing Type	Voltage (VDC)	Current (A)	Power (W)	Speed (RPM)	Air Flow (CFM)	Air Flow (m ³ /min)	Air Pressure (mmH ₂ O)	Air Pressure (Inch H ₂ O)	Noise (dBA)
TRS9225X12L	※◎	12 (7.0~13.8)	0.18	2.16	2000	38.13	1.08	1.57	0.06	22.4
TRS9225X12M	※◎	12 (7.0~13.8)	0.26	3.12	2500	47.94	1.36	2.47	0.10	29.3
TRS9225BX12H	※◎	12 (7.0~13.8)	0.35	4.20	3000	58.78	1.66	3.31	0.13	33.6